

## Consumer participation in standardization at national level

Prague 6 October 2009

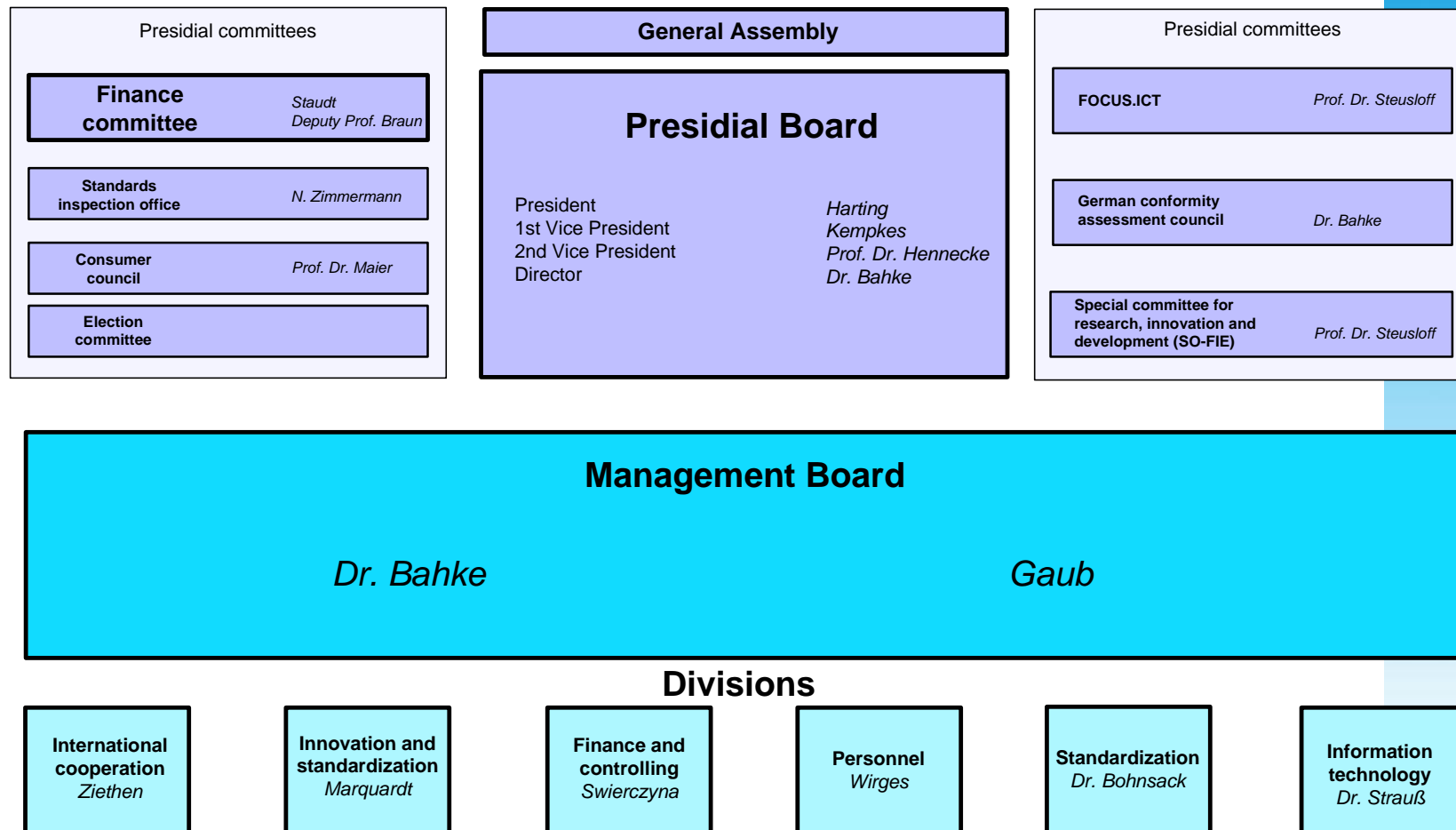
Lothar Maier  
Chairman  
Consumer Council

- Founded in 1974 to represent the consumer in standards committees dealing with consumer goods / services
- Consumer Council is organised as a committee of the DIN presidial board

# Organization of DIN



DIN Deutsches Institut für Normung e. V.



As of 2009-02-01

# Members of Consumer Council (1)



DIN Deutsches Institut für Normung e. V.

- Members of Consumer Council are honorary members and independent of DIN interests. They are nominated by the DIN President in consultation with the Federal Ministry of Food, Agriculture and Consumer Protection, and the Federation of German Consumer Organisations (vzbv)

## Members of Consumer Council (2)



DIN Deutsches Institut für Normung e. V.

- **University of Applied Sciences**, Hamburg  
(Mr Prof. Dr. Lothar Maier, Chairman)
- **Federation of German Consumer Organisations**, Berlin  
(Mr Dr. Holger Krawinkel)
- **Consumer Centre**, Berlin (Ms Gabriele Francke)
- **Federal Institute for Materials Research and Testing**, Berlin  
(Mr Prof Dr. Heinrich Heidt)
- **Consumer Institute for Comparative Testing**, Berlin  
(Mr Dr. Holger Brackemann)

Permanent guests to Council meetings:

- Federal Ministry of Food, Agriculture and Consumer Protection
- DIN Management Board

- Executive body
- Consumer Council's office is part of the DIN structure
- Staff members are employed by DIN
- 9 staff members,
- representing the interests of consumers according to the resolutions of the Consumer Council

- Public funds granted by the Federal Ministry of Food, Agriculture and Consumer Protection (about 70%)
- DIN contributes an additional sum and organisational support (about 30%)

- Monitoring of consumer relevant standardisation projects
- Prioritization of standardisation projects according to consumer interests
- Investigation of consumer concerns in collaboration with consumer associations, experts, scientists, authorities and others, e.g. in form of enquiries, research etc.
- Conversion of consumer interests into adequate technical standard proposals, comments, objections etc.



- Representation of consumers in the relevant committees (national, European, International)
- Co-ordination and support of voluntary consumer representatives
- Participation in ANEC and COPOLCO activities

- Permanent staff is supported by about 70 voluntary consumer representatives, nominated by the Council for specific standard projects
- Volunteers come from consumer organisations, consumer advisory centres, consumer testing institute, special consumer related interest groups (e.g. automobile association, sports clubs), child protection associations, independent test institutes, universities etc.

- The priority programme of DIN Consumer Council comprises about 170 projects out of six standardisation areas:
  - Consumer products (safety / performance)
  - Food safety / hygiene
  - People with special needs
  - Environmental issues
  - Services
  - ICT

- Safety
- Performance
- Consumer Information
- Compatibility
- Durability
- Environmental performance

- **Safety of toys**

DIN EN 71 (several parts) Safety of toys



- **Safety of children's clothing**

DIN EN 14682 Safety of children's clothing - Cords and drawstrings on children's clothing - Specifications



## ■ Household appliances (Energy Labelling)



	<b>Energy Washing Machine</b>	
1	Manufacturer Model	
	More efficient	
	A	A
	B	
	C	
2	D	
	E	
	F	
	G	
	Less efficient	
3	Energy Consumption kWh cycle	0.95
4	Washing Performance	A B C D E F G
5	Spin Drying Performance	A B C D E F G
6	Spin speed (rpm)	1500
7	Capacity (cotton) kg	5.0
8	Water Consumption	50
9	Noise Washing (dB(A) re pw)	10
	Spinning	12

# Examples of our work

- **Elderly and disabled persons**

DIN 77800 Quality requirements for providers of "Assisted living for the elderly"





## Harmonization of interfaces for battery chargers



# Examples of our work

DIN Deutsches Institut für Normung e. V.



## Ease of opening - Criteria and test method for evaluating consumer packaging



DIN Consumer Council works actively at:

- National level (DIN standards committees)
  - as consumer expert
- European and International level
  - as part of the German delegation (TC)
  - as consumer expert (WG)
  - as ANEC Rep. (observer)